

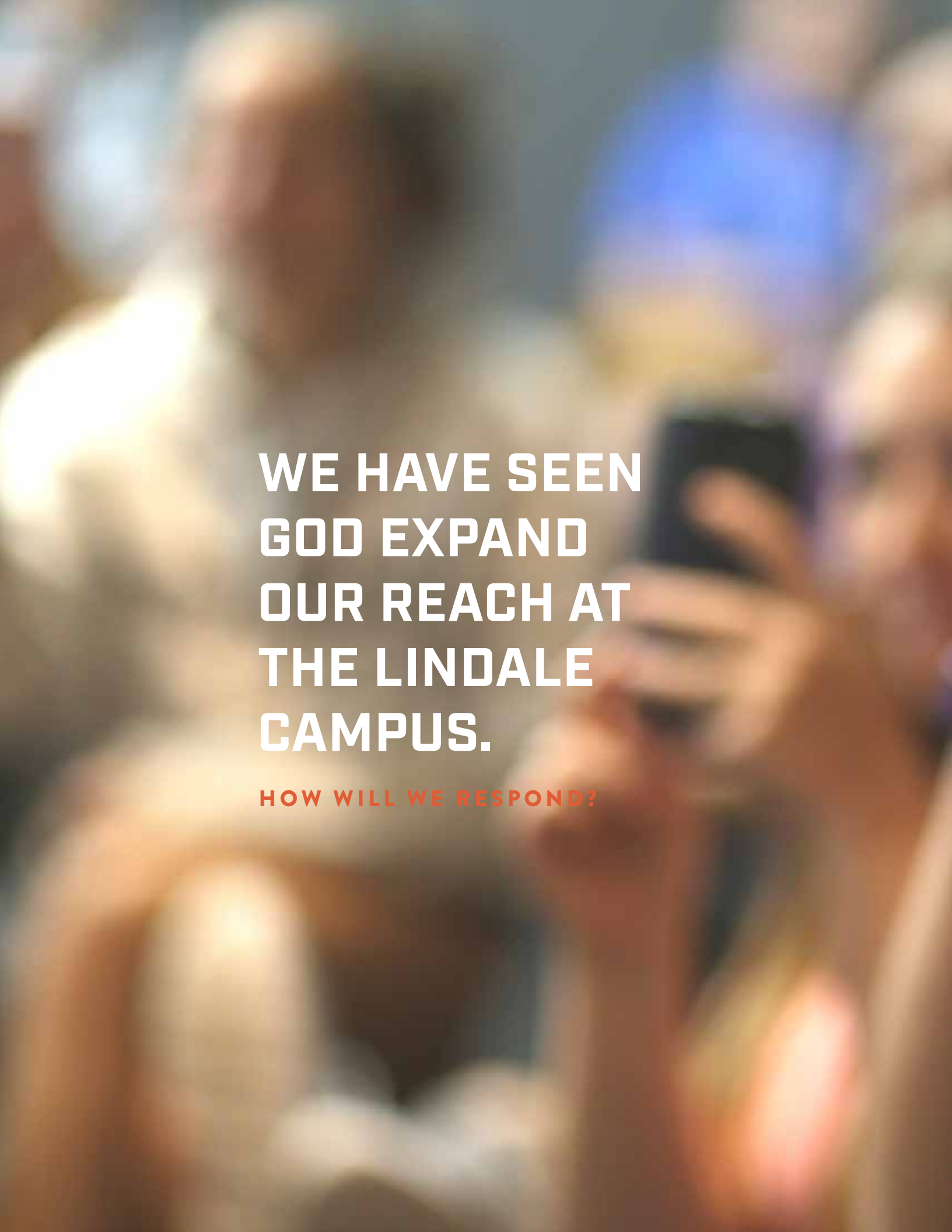


Reach + Respond

CASE STATEMENT

for the expansion campaign of the Lindale Campus Facilities





**WE HAVE SEEN
GOD EXPAND
OUR REACH AT
THE LINDALE
CAMPUS.**

HOW WILL WE RESPOND?





1. OUR MISSION

TO BE AND MAKE DISCIPLES FOR THE GLORY OF GOD

We do this by helping people to:

- Give more of their heart to and WORSHIP God daily.
- Strategically move outward with the MISSION of the gospel.
- Mature in their faith as a COMMUNITY of believers.

2. THE VISION

REACH AND RESPOND

Acts 1:11 “Why do you stand looking into heaven?”

As Jesus ascends into heaven, His followers stand frozen in wonder and reverence. Yet, there is no doubt that God desires for His people to move out. Immediately, a messenger standing among them says, “Why do you stand looking into heaven?”

We must never give up gathering for the edification of our hearts and minds, but the Body of Christ was built to REACH out. The beauty of the gospel compels us to RESPOND to the lost and broken in our world.

Therefore, when we see God clearly expanding our reach, we must faithfully respond.

3. WHAT WE SEE GOD DOING

SPECIFICALLY AT THE LINDALE CAMPUS

GATHERING MORE ADULTS AND FAMILIES TO HIM FOR WORSHIP

Over the past 3 years, we have seen 25% growth in the worship center, more than any time in our history. There are some Sundays when we simply can't fit everyone. We are NOT maxed out yet, but we will be soon.

BRINGING NEW BELIEVERS AND NEW MEMBERS

We consistently baptize new believers, young and old. Additionally, demand for discipleship space, training facilities, and classes continues to grow.

CALLING THE NEXT GENERATION

- Our Grace Student Ministry has doubled. As many as 150+ students participate on a Wednesday night, and cars back up down the road dropping off and picking up kids.
- Grace Kids are everywhere! At times, we have as many kids as our OJ campus which serves twice as many people.
- We have no room to stay small as we get bigger. Because we value small group, personal interaction, kids and students must gather in staff offices, hallways, outside, etc. They play in the parking lots and make the most of the space, but that space is gone.

PUSHING MINISTRY OUTSIDE THE WALLS

This is a good thing! We are missionaries at Grace. Therefore, we desire to be "sent in the same way" the Father sent Jesus: incarnationally into the lives of the lost and disconnected. (John 20-21) However, we also need to gather for training and encouragement. We serve those hurting through Grace Groups and Grief Share, we teach and equip kids, teens, and adults in increasingly limited space. While we believe gathering in our home is a powerful Biblical practice of the church, we need to account for education space so we can train and send more out.

THE HISTORIC EXPANDING OF OUR REACH AS A COMMUNITY

Our current reach is bigger than we realize.

- 16,000-18,000 people live within a 7 mi radius of downtown Lindale. Some studies suggest as many as 40% are religiously unaffiliated.
- If we can reach just 2% of that population, our church could grow by over 300 people. Over 100 of those would be new believers!
- Lindale continues to pursue an aggressive, unified economic development plan to spur even more growth. God is indeed expanding our boundaries.
 1. Lindale is now a 5A school that is still growing by 1-2% a year.
 2. NEW business such as Love and War, TJC, and the health care industry continue to make significant investments here.
 3. Homes are being built at a dramatic rate. Some estimates suggest that inside the city limits alone, there is a growth rate of 5-6% per year. Young families, young professionals, and retirees continue to flock to this area.

4. HOW WILL WE RESPOND?

NOW THAT GOD HAS EXPANDED OUR REACH

SEEK WISE COUNSEL AND PRAY

For the last 18 months, staff and elders sought prayer and wise counsel with many members and community leaders representing a diversity of expertise and demographics. We asked the hard questions through formal and informal interactions. After a strenuous, prayerful process involving members of the church, staff, lay leadership, and volunteers, we developed the following plan:

EXECUTE THE PLAN

Through the process, we feel led by the Spirit to put forward the following expansion plan for all of us to REACH more as we RESPOND to God's movement in our community.

A. FULLFILL THE PROMISE. We were gifted this land years ago; now we are poised to maximize its potential. Based on conservative estimates driven by current growth patterns and land limitations, we can expand to support a church of 1000-1300 adults and kids. (We have included parking and infrastructure to handle the expansion in these phases.)

B. PHASED APPROACH. We have a master plan that must be addressed in phases based on the resources we are able to gather as the church.

Phase 1: Next Gen Addition: We will renovate the existing building and add over 10,000 sq. feet of large and small group space to accommodate current and future growth in Grace Kids, Joy, GSM, and the EEC. This includes an outdoor sport court, play areas, and space to ease the demands on the worship center.
\$2.8 million

Phase 2: Expanded Worship Center: We will upgrade and expand the current worship center to serve 600 people in one service.

Build Sending Center: We will add dedicated space to handle adult discipleship training classes and gathering space for the purpose of equipping, encouraging, and sending out disciples to make disciples for the glory of God.

C. GO INTO THE COMMUNITY TO BE AND MAKE DISCIPLES!

PHASE 1A



PHASE 1B



PHASE 2







5. HOW WILL YOU RESPOND?

NOW THAT GOD HAS EXPANDED OUR REACH

IN THE WEEKS TO COME

Pray about your response as we continue to put the plan in front of you and answer questions. This will require ALL of our participation to see this vision realized. To that end, please pray about responding in one of two ways.

- A one-time gift
- A pledge to be paid over 3 years

Pledges and donations may be made in the weeks following the communication phase of this plan. As is GCC's practice we will not build what we can not afford. Therefore, our Elder-driven tradition is to start construction only when we have 100% of pledges and 50% of the funding in the bank.

Please remember, this is a God-sized goal that will take every single one of us participating at some level. We must not only cover the operating budget which allows mission to carry on, we must give over and above to reach this goal. The cause is worthy because the opportunities are great. God is expanding our reach, let's respond in faith to His good work among us.

3 YEAR CAMPAIGN

GIFT BREAKDOWN

GIFTS	PER MO (36)	PER YR (3)	PER 3 YRS	3 YR TOTAL
80	\$75	\$900	\$2700	\$216,000
70	\$100	\$1200	\$3600	\$252,000
60	\$150	\$1800	\$5400	\$324,000
50	\$300	\$3600	\$10,800	\$540,000
10	\$600	\$7200	\$21,600	\$216,000
5	\$1200	\$14,400	\$43,200	\$216,000
5	\$2400	\$28,800	\$86,400	\$432,000
3	\$2800	\$33,600	\$100,800	\$302,400
1	\$9800	\$117,600	\$352,800	\$352,800
284				\$2,851,200



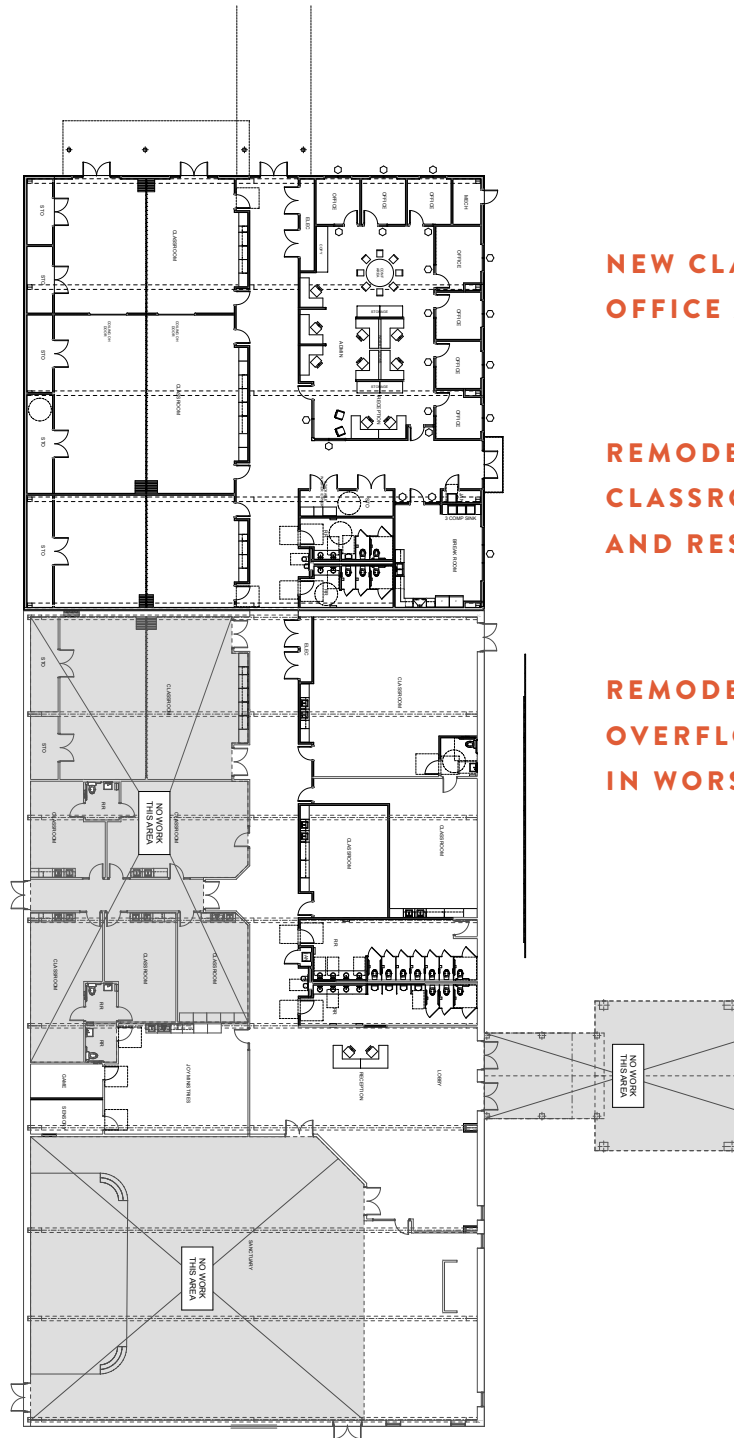
“WHY DO YOU STAND LOOKING INTO HEAVEN?”

ACTS 1:11



PHASE 1

FLOOR PLAN



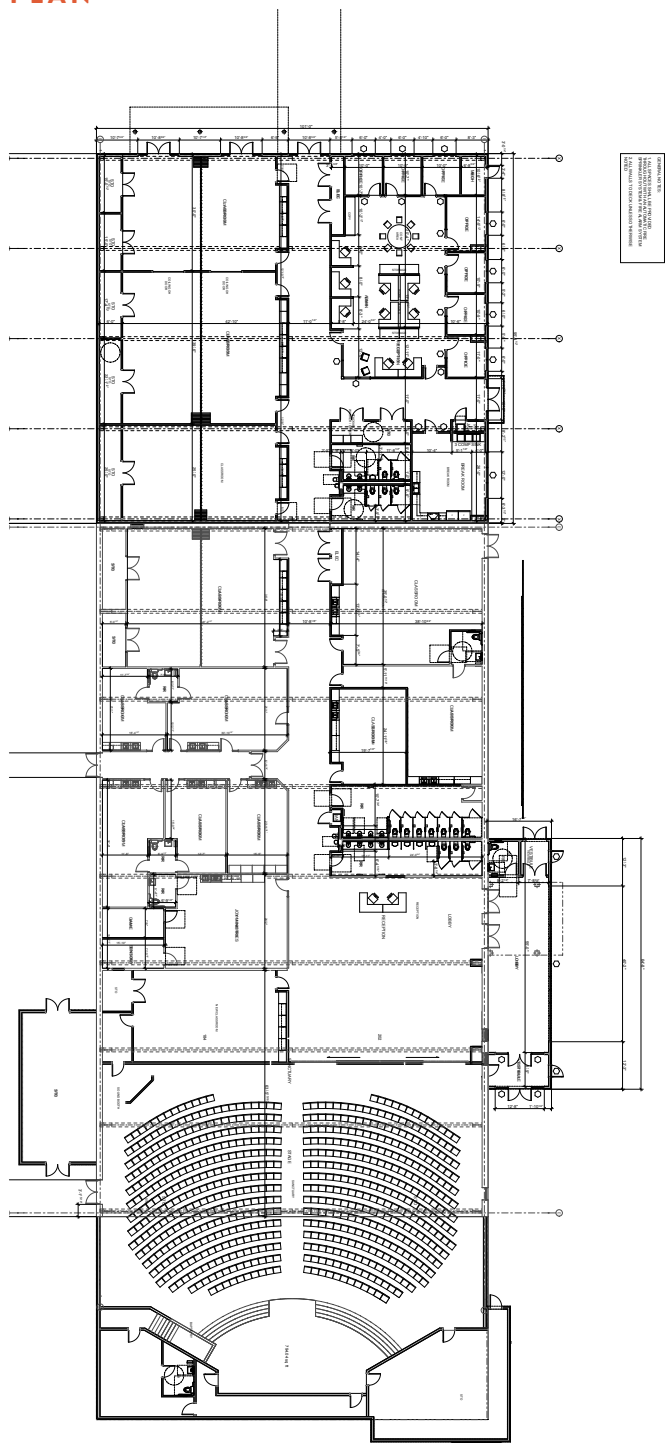
NEW CLASSROOM +
OFFICE ADDITION

REMODELED
CLASSROOMS, LOBBY,
AND RESTROOMS

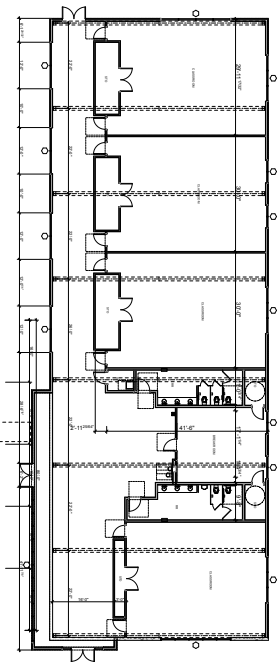
REMODELED
OVERFLOW SEATING
IN WORSHIP CENTER



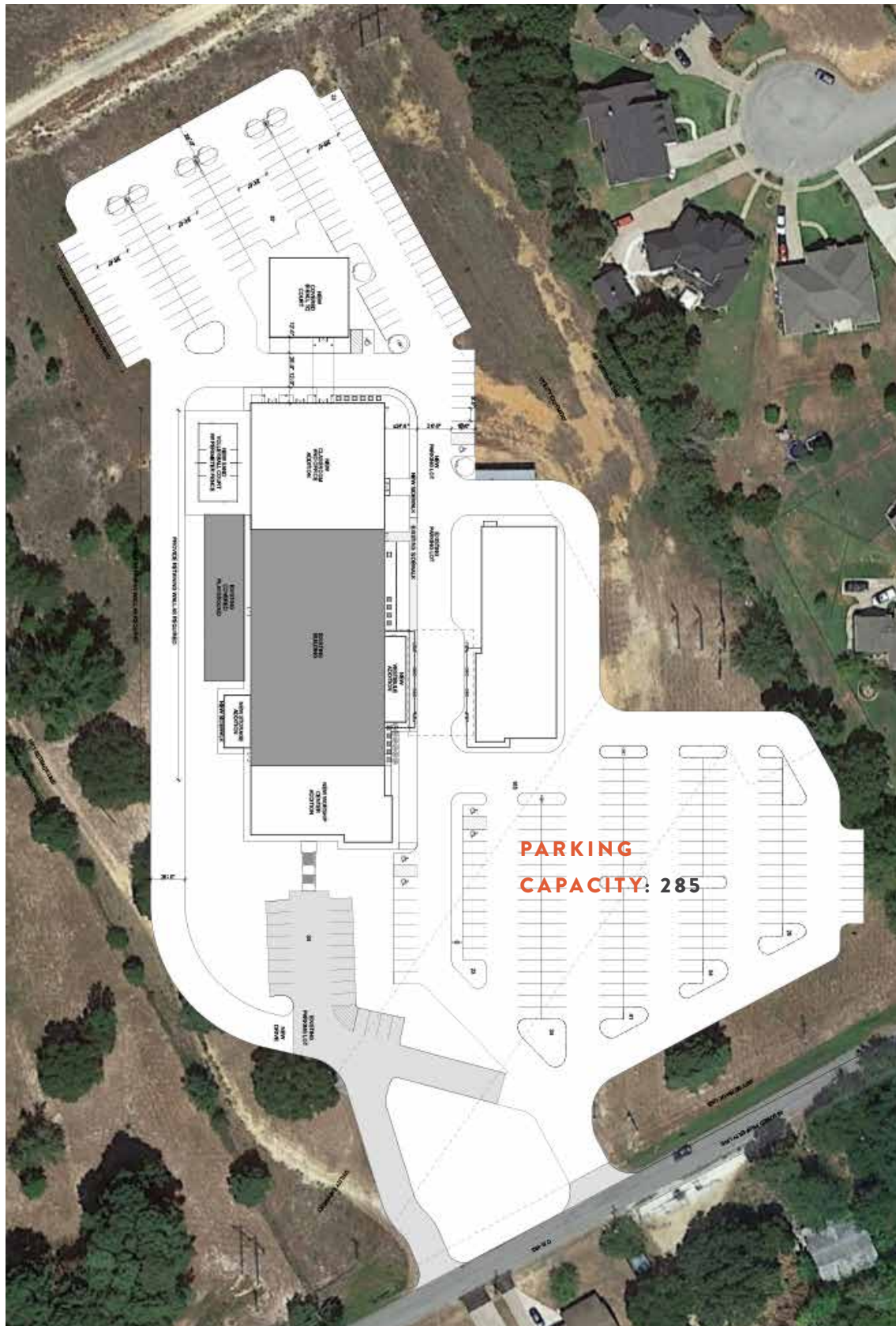
PHASE 2
FLOOR PLAN



NEW
DISCIPLESHIP
CENTER



EXPANDED LOBBY +
WORSHIP CENTER





LEARN MORE OR GIVE AT
GCC.ORG/RESPOND